



MABLE'S MISSION

Impact Report

2024

Table of Contents

01

Introduction

02

Our Story

03

Our Goals

04

Our Strategy

05

Our Impact

06

Our Finances

07

Conclusion

Introduction

At Mable's Mission, 2024 has been a transformative year filled with incredible milestones and heartwarming stories. As a foster-based rescue, our mission is to give shelter dogs a second chance at life by rescuing those most at risk, providing them with the care they deserve and finding them loving forever homes.

This year, thanks to our dedicated team of volunteers, generous supporters, and compassionate adopters, we've saved lives and strengthened our community. From organizing impactful events like the Mutt Mash to collaborating on vital donation drives for disaster-affected areas, we've proven that we can make a difference together.

Every dog that crossed our path in 2024 had a story of resilience, hope, and the transformative power of love. And every one of those stories is a testament to the power of people coming together to create change.

We invite you to explore our 2024 Impact Statement, celebrating the lives we've touched, the progress we've made, and the exciting future we're building for Mable's Mission.

Thank you for being an essential part of our journey. Together, we are giving shelter dogs a second chance at life.

Our Story So Far

Our Mission

We believe in creating a compassionate community that values and cares for every dog. Every dog deserves love, dignity, and a chance to thrive, no matter their past.

We are dedicated to giving shelter and stray dogs a second chance at life. By rescuing those at risk of euthanasia or abandonment, providing comprehensive care and rehabilitation, and finding them loving forever homes, we strive to be a beacon of hope for dogs in need.

Through advocacy, education, and collaboration, we are building a network of support for these animals. Together, we aim to inspire a world where every dog is cherished, every wagging tail is celebrated, and second chances are always within reach.

Our Purpose

At Mable's Mission, our purpose is to save and transform the lives of shelter dogs while building a compassionate and informed community. We are committed to reducing Florida's dog euthanasia rate by rescuing dogs at risk, providing rehabilitation, and advocating for adoption.

Through education, we aim to raise awareness of the struggles shelter dogs face, challenge harmful breed stereotypes, and inspire others to see every dog's potential. Together, we are creating a world where no dog is left behind and every life is valued. This is our purpose. This is Mable's Mission.

Increase of dogs
saved from 2023

1733%

Our 2024 Goals

1

Raise Awareness

Educate the community about the struggles faced by shelter and rescue dogs, promote responsible pet ownership, and challenge misconceptions about breeds and adoption.

2

Save More Lives

Rescue and rehabilitate more dogs from euthanasia than we did in 2023, providing them with the care and second chances they deserve.

3

Expand Our Foster Network

Grow our foster network to ensure more dogs can transition from shelters to loving temporary homes on their way to forever families.

4

Strengthen Community Partnerships

Build partnerships with local businesses, shelters, and organizations to create a united front in reducing Florida's dog euthanasia rate and increasing adoption success stories.

Our 2024 Strategy

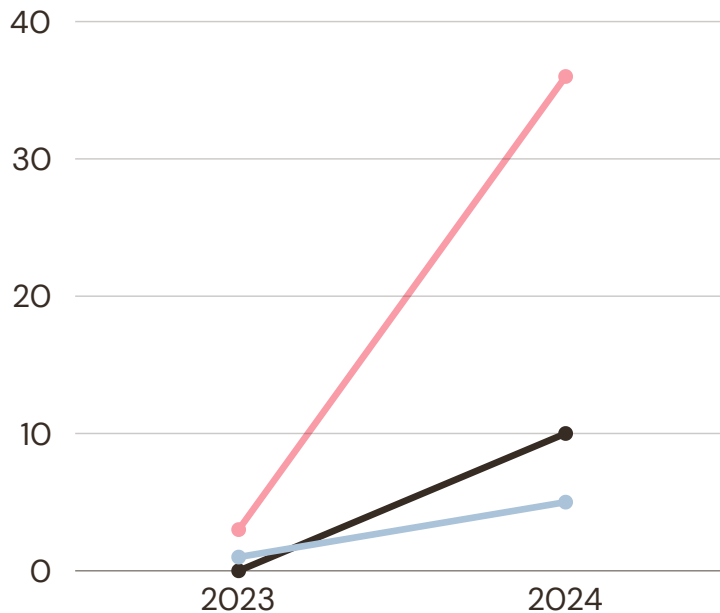
In 2024, Mable's Mission focused on expanding our impact and strengthening our efforts to save more dogs and lower Florida's euthanasia rate. Our strategy revolves around four key pillars:

1. Expanding Our Network
2. Enhancing Education and Advocacy
3. Increasing Rescue Efforts
4. Strengthening Partnerships

INITIATIVES	DETAILS	OUTCOME
Last Chance Dog Project	A partnership to save dogs from the PBCACC euthanasia list	<ul style="list-style-type: none"> • Saved 4 dogs from euthanasia
Our First Sponsored Event	Ice Cream Social, our first event partnering with local businesses	<ul style="list-style-type: none"> • Raised \$1,119
Rescue Partnership Initiative	Expand by partnering with more kill shelters	<ul style="list-style-type: none"> • Partnered with 2 more kill shelters in Florida to save more dogs
Hurricane Relief Donation Drive	Partner with businesses and connect with the community for hurricane relief	<ul style="list-style-type: none"> • Acquired and distributed more than 4 dozen bags/cans of food

Dogs Saved in 2024

Comparison to 2023 Shown



40

Dogs Saved From
Death Row/Shelters

10

Dogs Saved From the
Streets

7

Surrenders or Neglect
Cases Received

This year, we proudly rescued 57 dogs, each with a unique story and a second chance at life.

- 40 dogs were saved from death row or shelters, pulled just in time to avoid euthanasia or severe decline.
- 10 dogs were rescued directly from the streets, given the safety, medical care, and love they desperately needed.
- 7 dogs came to us through surrenders or neglect cases, where we stepped in to ensure they received the care and compassion they deserved.

Every life saved is a testament to the power of community and the unwavering commitment of Mable's Mission. Together, we are changing lives—one dog at a time.

Our Income Statement

Item	Amount
Revenue	
Online Donations	\$36,008
Adoption Donations	\$4,735
Grants	\$3,600
In-Kind Donations	\$3,747
Sponsorships	\$3,200
Fundraising Event	\$12,164
Total Revenue	\$63,454
Expenses	
Operational	\$6,209
Program	\$17,005
Marketing	\$1,798
Fundraising	\$3,314
Veterinary	\$33,032
Total Expenses	\$61,358
Net Income	\$2,096

Our Expense Details

Category details and monthly budget (% based)

Operational

Operational expenses include gas for transports, our storage unit for crates and supplies, and expenses related to our website.

Program

Program expenses include food, beds, OTC medications & preventatives, supplements, crates, and other needs for our foster dogs.

Fundraising/Marketing

Fundraising/Marketing expenses include all things related to putting on a fundraising event and advertisements for our adoptable dogs.

Veterinary

Veterinary expenses include everything related to vetting and medical care, from vaccines to surgeries.

Budgets

Operational

15%

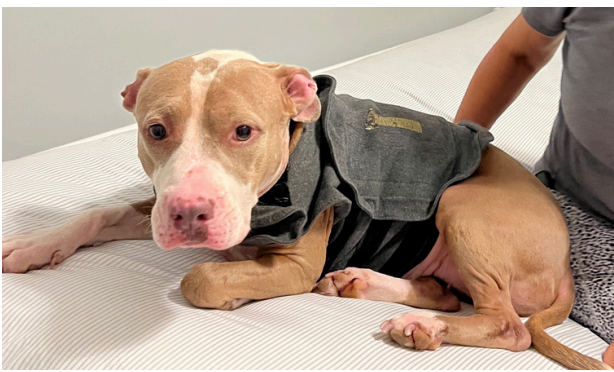
Fundraising/Marketing

10%

Program/Veterinary

75%

We thank you for your ongoing support. We could not save dogs without you.



Acknowledgements

We thank our Board of Directors, volunteers, fosters, adopters, supporters and donors for the success of our programs in 2024.

Mable's Mission
Hobe Sound, FL 33455
973-747-7212
briana@mablesmission.org
#92-3211817